



E&V ID W-02US3J

IBIZA — TALAMANCA

Mediterranean Villa with panoramic sea views in Can Rimbau

TOTAL SURFACE

approx. 460 m²

NUMBER OF BEDROOMS

6

PLOT SURFACE

approx. 2,220 m²

ASKING PRICE

9,000,000 EUR



Property Details

Total Surface

approx. 460 m²

Asking price

9,000,000 EUR

Fireplace



Usable Surface

415 m²

Plot Surface

approx. 2,220 m²

Total Number of Bathrooms

6

Views

Open View, Water View, Harbour View

Number of Bedrooms

6

Elevator

Lift

Heating

Underfloor Heating

Commission Text

Availability upon agreement.

Engel & Völkers does not accept responsibility as the information provided in this brochure is for information only and it is subject to errors, omissions, change of price or withdrawal without notice.

Taxes, notary and registry fees must be paid by purchaser, the commission to E&V paid by the seller as stipulated by Spanish regulations.



Property Description

This Mediterranean villa is located in one of the most exclusive gated urbanisations of Ibiza called "Can Rimbau". Sought after for its central location and proximity to Ibiza Town. Within walking distance you reach the village of Jesus which offers a selection of supermarkets, bakery and restaurants. The famous beaches of Talamanca and Ses Salinas are only a few minutes drive. With its natural stone wall and wooden elements you enjoy a cozy mediterranean flair with panoramic sea views including views to old town "Dalt Vila" and Formentera. Divided on three levels the villa offers six bedrooms, an office, an open space living room, a rooftop terrace as well as a night club and a garage. The generous Mastersuite comes with a walk-in closet and private sun terrace with sea views, and four guest rooms each with en suite bathrooms and access to a terrace. The generous living room is divided into a dining

area followed by the lounge with fireplace and open plan kitchen with Gaggenau appliances. Sitting on the sofa lounge you enjoy breathtaking views to the Mediterranean sea and old town "Dalt Vila". Opening up the floor to ceiling windows you can combine indoor with alfrescoliving. From the main level you have access to the pool with its lounges and outdoor bar. Continuing with the elevator or with stairs you reach the highest level, the rooftop terrace. You will find several lounges and dining possibilities, a jacuzzi, a professional outdoor cuisine with BBQ. The property is equipped with underfloor heating, electric curtains and shutters, garage for 3-4 cars and a night club/cinema room. A plus is the separate staff studio with kitchenette. The ideal estate to host a group of friends and enjoy unique Ibiza vibes.



Location Description

Can Rimbau is an exclusive gated urbanisation with only around 40 luxurious villas. Known for its beautiful views to the Mediterranean sea and old town, it is also known for a high-end neighborhood. A plus is the proximity to restaurants and grocery stores which is ideal

for those who would like to walk. The beach of Talamanca is reachable within a short drive or walking. The airport of Ibiza is an approximate 15 minutes drive away.





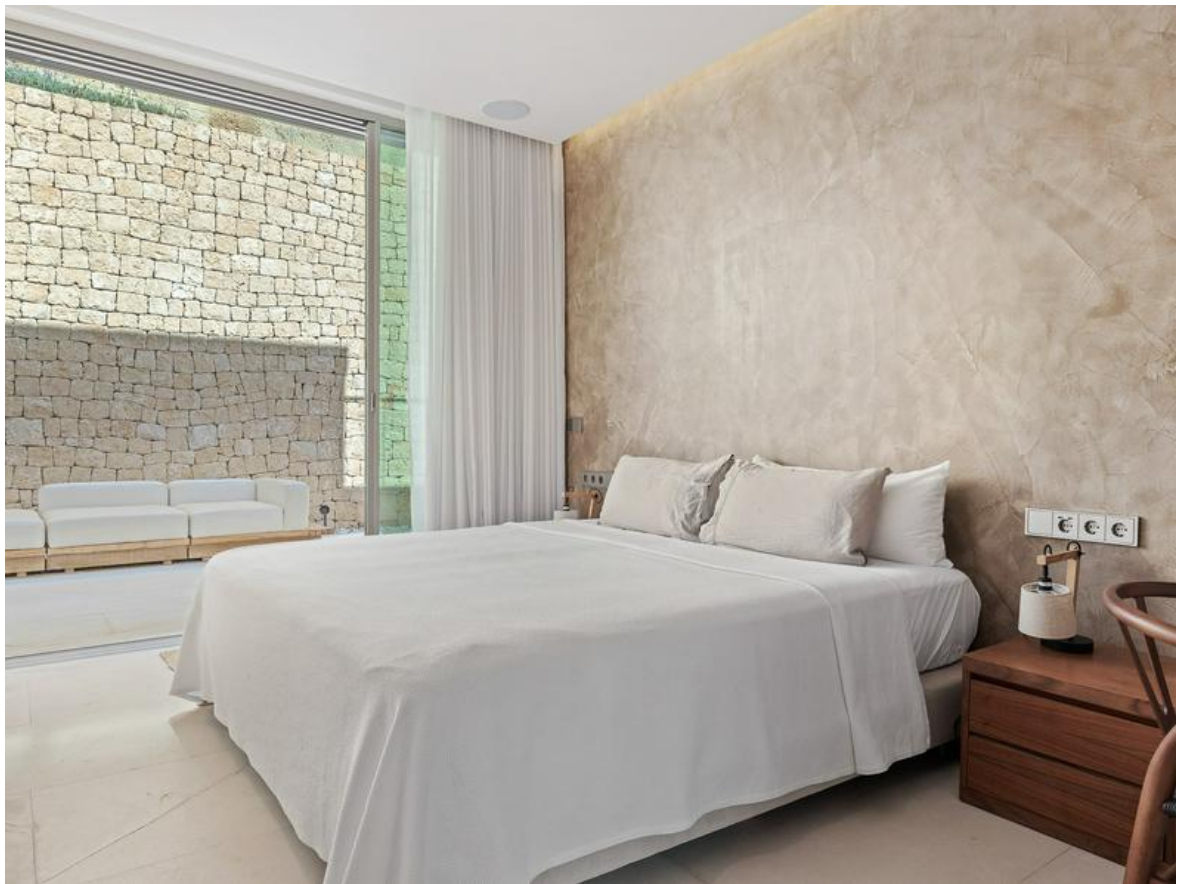


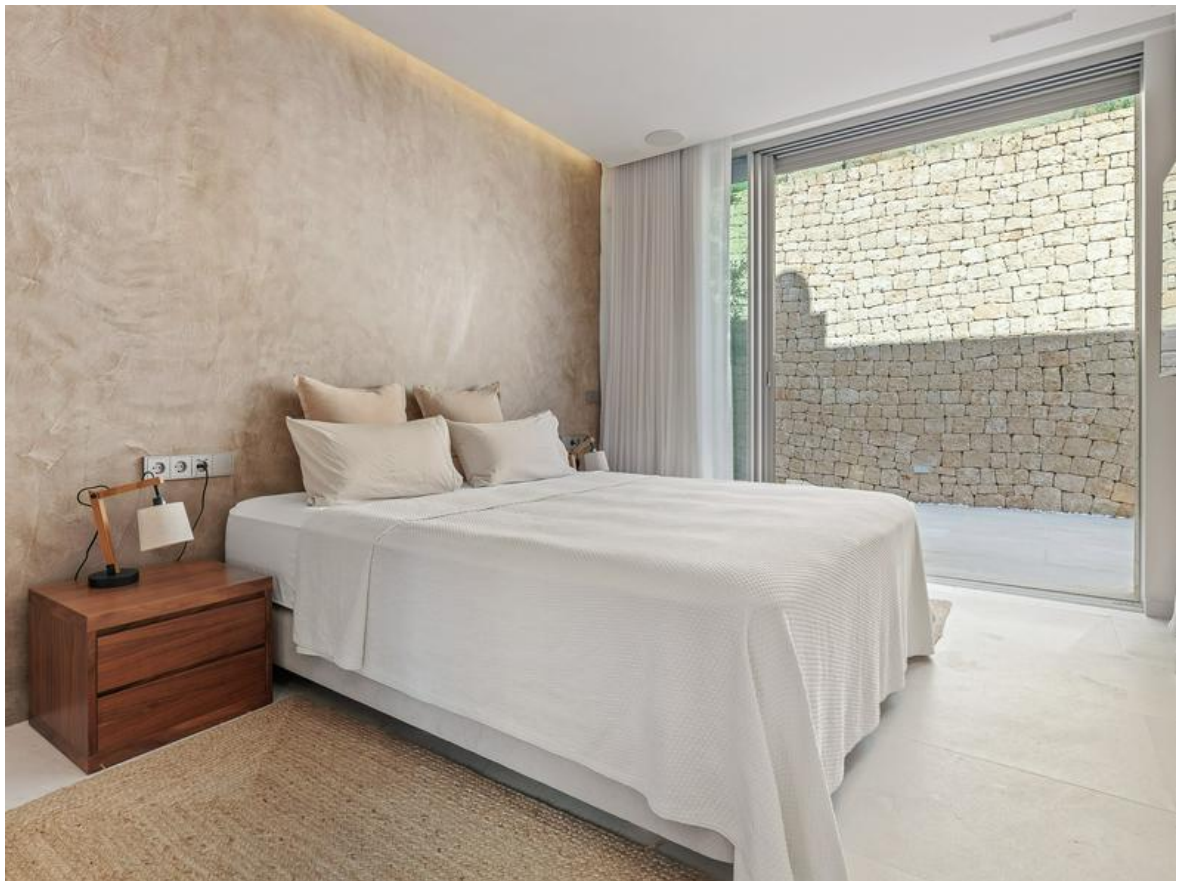






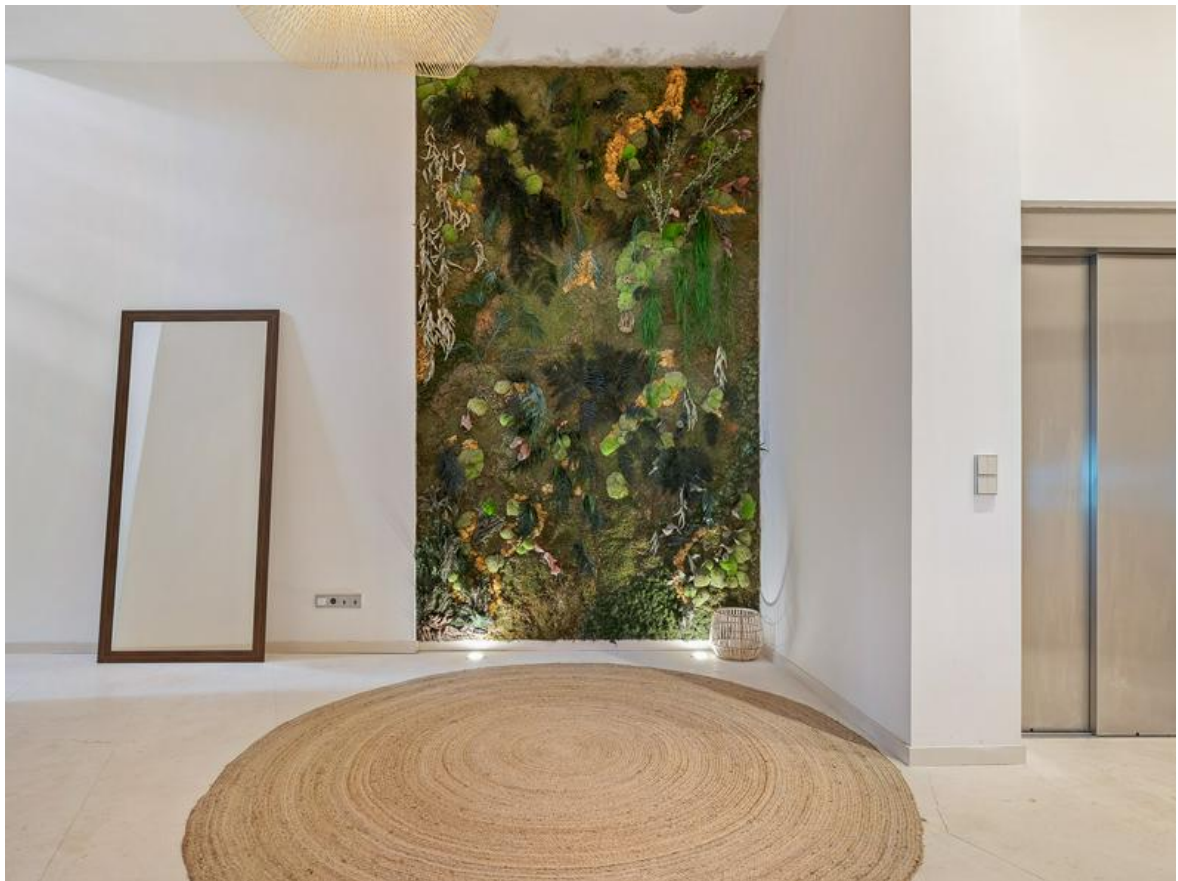
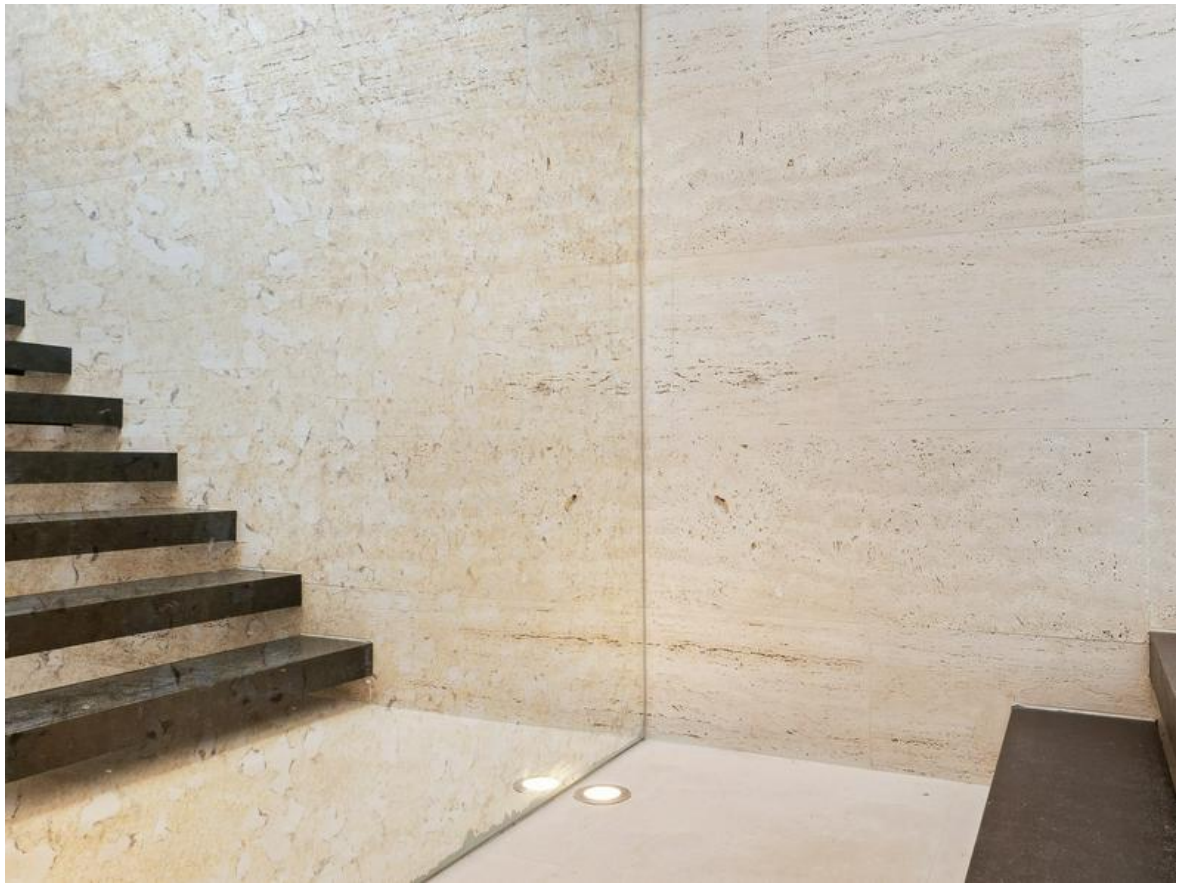












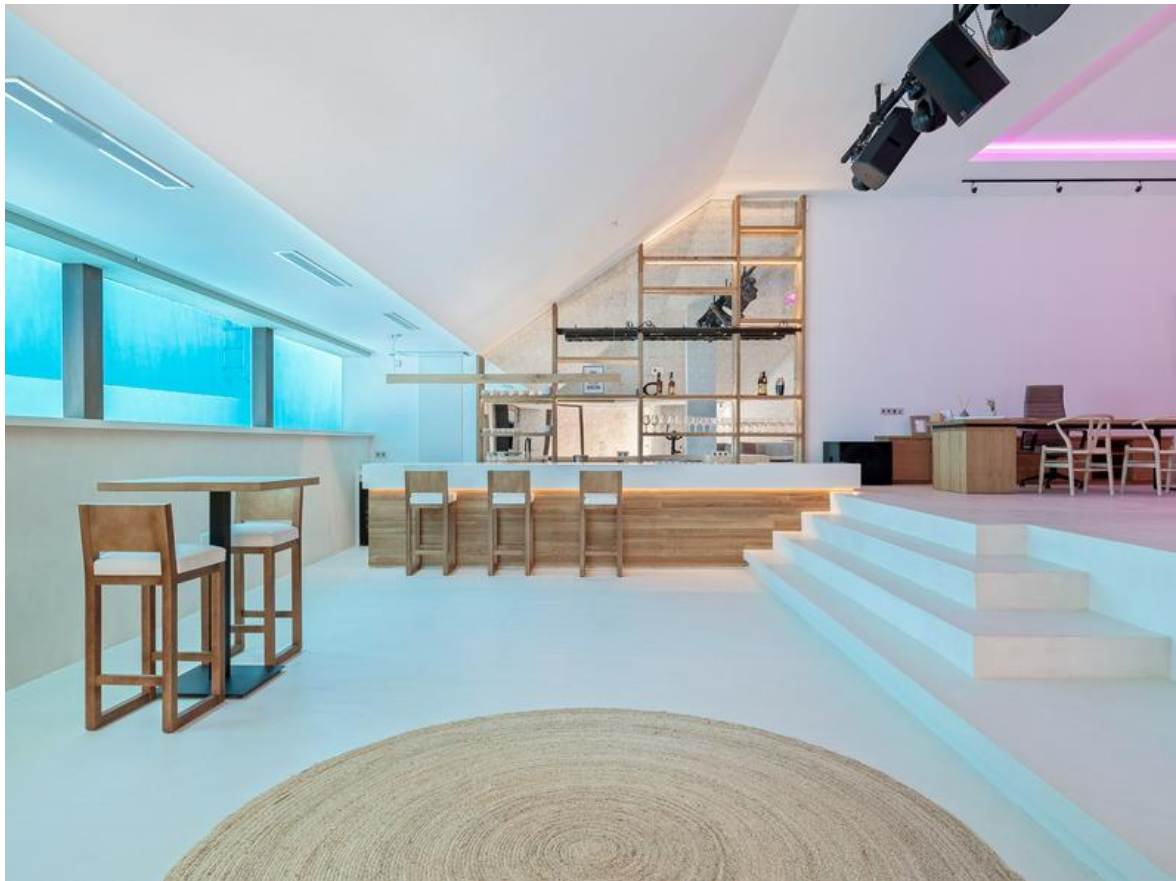














Important Notice

In compliance with the current Personal Data Protection Law, we inform you that your personal data were included in an automated file owned by Engel & Völkers Ibiza, S.L., with CIF B57138182 and fiscal address at Avda. Santa Eulalia, 17 bajos, 07800 Ibiza, Spain, to attend to the commitments derived from the relationship between the two parties. Engel & Völkers Ibiza, S.L. informs that all data will be handled lawfully, loyally transparently, appropriately, suitably, with restrictions, precisely and kept up to date. You may exercise your right to access, rectify, limit treatment, supress, withdraw and oppose to your personal data treatment, as well as the consent provided for its treatment by sending your request by email to Ibiza@engelvoelkers.com.

